



***The Productivity Devices Company***



## **Installation Clamping Module With Central Lock For Automation Solutions**

**MPL5702**

**OPERATING & INSTALLATION MANUAL**

**Keep for future use!**

Document number: MPL5702

Revision: A

Revision Date: 9/23/25

ECN: 5818

For the following part numbers:

- 570263 - ZERO POINT, KH20, 55KN, HYD OPEN, PNEU BLOW OFF, SENSING, CENTRAL LOCK

This operating & installation manual and all illustrations contained therein are protected by copyright. Every use without prior written consent of the publisher that is outside the limits authorised under copyright is prohibited and punishable. That applies especially for reproductions, translations, microfilming, storage, and processing in electronic systems. For approval inquiries, please contact the publisher.

# I. Contents

1	Introduction .....	5
1.1	Warranty and Liability .....	5
1.2	Service / customer service .....	5
2	Safety .....	6
2.1	Intended use .....	6
2.1.1	Structural changes to the installation clamping modules .....	7
2.1.2	Foreseeable improper use .....	7
2.2	General safety notes .....	7
2.3	Special dangers / residual risks .....	8
2.3.1	Risk of injury if the fixture or workpiece falls .....	8
2.3.2	Dangers caused by independent movement of parts .....	8
3	Description of the installation clamping modules .....	9
3.1	Technical data sheet .....	9
3.2	Application hydraulic installation clamping modules .....	11
3.2.1	Design of hydraulic installation clamping modules .....	11
3.2.2	Circuit diagram of hydraulic installation clamping modules .....	12
3.2.3	Dimensions of hydraulic installation clamping modules .....	12
3.2.4	Example of circuit diagram for hydraulic installation clamping modules .....	13
3.3	Pull-stud .....	13
3.3.1	Design .....	13
3.3.2	Installation Instructions .....	14
3.3.3	Arrangement and tolerances of the pull-studs .....	14
3.3.4	Arrangement of the pull-studs - classical .....	15
3.3.5	Arrangement of the pull-studs - optional .....	15
3.4	Performance and restrictions on use .....	16
3.4.1	Pull-in force and locking force .....	16
3.4.2	Holding force .....	16
3.4.3	Safety precautions .....	16
3.5	Function description .....	16
3.5.1	Function of the hydraulic installation clamping module .....	16
3.5.2	Support control .....	16
3.5.3	Opening control .....	16
3.6	Necessary tools .....	17
4	Transport and Storage .....	17
4.1	Inspection by recipient when taking possession .....	17
4.1.1	Unpacking .....	18
4.2	Supplied as standard .....	18
4.3	Temporary storage .....	18
5	Installation .....	18
5.1	Tolerances and arrangement of the installation clamping modules .....	19
5.2	Ambient and Operating Conditions .....	20
5.3	Preparatory measures .....	20
5.4	Install the installation clamping modules .....	21
5.5	Disassemble installation clamping modules .....	23
6	Commissioning .....	26

7	Operation .....	26
7.1	Hydraulic installation clamping modules .....	26
7.1.1	Opening procedure.....	26
7.1.2	Clamping process.....	26
7.2	Integrated blow-out procedure .....	27
7.3	Manual blow-out process .....	27
7.4	Actuation of central lock .....	27
7.5	Clamping installation clamping modules .....	27
7.6	Opening installation clamping modules.....	27
8	Fault and repair measures .....	28
9	Maintenance .....	29
9.1	Safety measures for maintenance work .....	29
9.2	Inspection and maintenance work.....	29
9.2.1	Maintenance intervals .....	29
9.2.2	Maintenance – daily .....	30
9.2.3	Maintenance – monthly .....	30
9.2.4	Maintenance – annual.....	31

# 1 Introduction

The Operating & Installation Manual provides the information necessary for the safe and reliable operation of the installation clamping modules. All personnel involved in installation, operation, maintenance, cleaning, or troubleshooting must read and follow this manual. All safety instructions and procedures must be strictly observed. Anyone working with this equipment must understand and comply with these instructions.

After reviewing the Operating & Installation Manual, users will be able to:

- Properly install and safely operate the installation clamping modules
- Disassemble the clamping modules as required
- Clean the clamping modules as specified
- Respond appropriately to faults or malfunctions

In addition to this manual, all applicable federal, state, and local regulations — including workplace safety and environmental requirements — must be followed.

Vektec LLC reserves the right to revise this documentation at any time to reflect product improvements or design updates without obligation to issue an immediate revision.

## 1.1 Warranty and Liability

All information in this Operating & Installation Manual has been prepared in accordance with applicable standards, current industry practices, and Vektec LLC's technical expertise. This manual does not replace the user's responsibility to determine whether the installation clamping modules are suitable for a specific application. The manufacturer or distributor must conduct a complete risk assessment, evaluation, and functional test to confirm suitability for the intended use.

Warranty and liability claims are excluded for personal injury or property damage resulting from:

- Improper or unintended use of the installation clamping modules
- Incorrect installation, startup, operation, maintenance, or cleaning
- Failure to follow the instructions and safety information in this manual
- Use of unqualified or untrained personnel
- Modifications made without prior written approval from Vektec LLC
- Improper or unauthorized repairs
- Use of non-approved replacement parts or components that do not meet required specifications
- External factors such as accidents, environmental conditions, or force majeure

## 1.2 Service / customer service



Our customer service is available to you for technical information:

**Phone: +1(800)992-0236**

**Request Customer Support**

**Email: [CustomerSupport@Vektec.com](mailto:CustomerSupport@Vektec.com)**

In addition, our employees are constantly interested in new information and experiences resulting from use of the product that could be valuable for improving our products.

## 2 Safety



### WARNING

**Failure to observe the following safety notes can have serious consequences:**

Endangering of people by mechanical and chemical influences and the failure of important product functions!

- Thoroughly read through the safety and danger notes in this section before you put the installation clamping modules into operation.
- In addition to the notes in this operating & installation manual, observe the general safety and accident-prevention regulations.
- In addition to the notes in this operating & installation manual, observe the existing national occupational, operating and safety regulations. Also comply with existing internal company regulations.

### 2.1 Intended use

Safe operation of the installation clamping modules is ensured only when they are used as intended. These are spring-actuated, single-acting clamping devices designed to hold an interchangeable pallet or workpiece in a pressure-free, self-locking condition using a Vekttek LLC pull stud.

The modules are intended exclusively for positioning and clamping interchangeable pallets or workpieces used in cutting or non-cutting machining applications on machine tools or other suitable industrial equipment. They must only be operated within their specified technical limits. Maximum load capacities and operating pressure must never be exceeded. Any other use requires prior approval from the manufacturer.

Only pallets or workpieces equipped with an approved flat-head screw and pull stud may be clamped. The modules are designed for hydraulic and/or pneumatic operation and are intended strictly for industrial applications.

Use outside the intended purpose is prohibited. The following are specifically not permitted:

- Using the installation clamping modules as lifting devices
- Using the modules as pulling elements
- Using defective, unsuitable, or unapproved accessories
- Creating installation layouts that do not comply with Vekttek LLC specifications
- Operating the modules while untrained personnel are within the hazard area
- Operating the modules if they are damaged, malfunctioning, or modified
- Operating the modules without proper training

Intended use also includes:

- Following all instructions in the Operating & Installation Manual
- Performing inspections and maintenance at required intervals
- Operating within all specified conditions

## NOTE

### Notes on fastening bolts and pull-studs:

The holding force of the installation clamping modules is limited by the strength of the screw connection between the pull-stud and the fixture. Only screws with the permitted strength class may be used. Only original Vektek LLC pull-studs may be used. If the pull-stud is used in the company's own fixtures, an adequately dimensioned threaded bore and sufficient mounting material strength must be planned for by the owner.

All technical specifications listed in the technical data must be strictly observed.

### 2.1.1 Structural changes to the installation clamping modules

No modifications, additions, or alterations may be made to the installation clamping modules without prior written approval from Vektek LLC.

Unauthorized modifications void the manufacturer's warranty.

Replace any damaged or worn components immediately. Use only original replacement, wear, and accessory parts supplied or approved by Vektek LLC. These components are specifically designed for safe operation. Use of third-party parts may compromise safety and load capacity. Parts or accessories not supplied by Vektek LLC are not approved for use.

### 2.1.2 Foreseeable improper use

Any use beyond the intended application can result in severe injury.

Examples of foreseeable misuse include:

- Operating the modules beyond the limits specified in the technical data
- Using the modules as tool holders, lifting devices, hoists, or press tools
- Using the modules in unsuitable or prohibited work environments

### 2.2 General safety notes

- The installation clamping modules may only be operated and maintained by personnel who have read and understood this manual.
- Use the installation clamping modules only as intended.
- Do not perform any actions that compromise personnel safety or equipment integrity.
- Keep the work area clean and organized to prevent hazards caused by debris or loose parts.
- Do not exceed rated performance specifications.
- Ensure all labels and markings on the modules remain legible and replace them if necessary.

- Installation and service work may only be performed by qualified or properly instructed personnel.
- In the event of a malfunction, stop operation immediately. Repairs must be performed by trained personnel or Vektek LLC.
- Keep this Operating & Installation Manual at the equipment location and ensure it is accessible to all personnel working with the modules.

## 2.3 Special dangers / residual risks

### 2.3.1 Risk of injury if the fixture or workpiece falls



#### WARNING

##### **Risk of injury if the fixture or workpiece falls due to opening of the installation clamping module!**

Non-observance can result in death or serious injuries!

- Please note that opening of the installation clamping module during operation must be prevented by suitable countermeasures (disconnection of the energy supply after interlocking, use of safety valves or switches).
- While working, always wear the protective equipment necessary for the respective work.



#### WARNING

##### **Risk of injury during overhead applications or horizontal position of the pull-stud axis if the workpiece or fixture falls!**

Non-observance can result in death or serious injuries!

- In the case of overhead or horizontal applications, please note that the fixture or workpiece must be secured against falling before opening the installation clamping module.

### 2.3.2 Dangers caused by independent movement of parts



#### WARNING

##### **The installation clamping modules clamp by means of spring force. There is a risk of injury caused by independent movement of parts into their end positions after emergency off is actuated, after shutdown or if the energy supply fails!**

Non-observance can result in death or serious injuries!

- Do not reach into the installation clamping modules.
- Wait until the system is at a complete standstill.
- Use pressure maintenance valves.

### 3 Description of the installation clamping modules

All illustrations in this document are meant to provide a basic understanding and can deviate from the actual version.

#### 3.1 Technical data sheet

Technical data sheet hydraulic installation clamping modules:

	Unit	KH20
Pull-in force and locking force in the system up to	[kN]	20
Holding force in static application	[kN]	55
Holding force in dynamic application	[kN]	25
<b>Min. opening operating pressure.</b>	<b>[bar]</b>	<b>60</b>
<b>Max. opening operating pressure.</b>	<b>[bar]</b>	<b>70</b>
Blow-out operating pressure	[bar]	1-6
Opening volume	[cm <sup>3</sup> ]	10
Pre-positioning	[mm]	0.4
Repetition accuracy	[mm]	< 0.005
Max. permissible lateral forces	[kN]	20
Max. operating temperature	[°C]	+ 80
Diameter Ø	[mm]	112
Height	[mm]	44
Weight	[g]	1400

	Unit	KH20
Permissible ambient temperature in operation	[°C]	+ 15 to + 80
Permissible ambient temperature when placing in storage	[°C]	+ 10 to + 35
Permissible air humidity during storage	[%]	10 to 90

## NOTE

The holding forces are dependent on the load cycles, i.e. how often the installation clamping modules are subjected to tensile stresses in the axial direction.

1) The application is deemed static if the system is subjected to a max. of 100,000 load cycles at full utilisation of the specified holding force.

2) The application is deemed dynamic if the system is subjected to more than 100,000 load cycles at full utilisation of the specified holding force.

## NOTE

Note on the compressed air of the installation clamping modules:

- Prepared with service unit (dry air, water separator filter, oil-mist lubricator).

Air purity: Compressed air according to ISO 8573-1: 2010 [7: 4: 4].

- Use only oils of viscosity class VG 32 according to ISO 3448.

Note on the hydraulics of the installation clamping modules:

- Use the following oils:

HLP 22/32/46

ISO VG 22/32/46 (DIN 51519)

ISO VG 10 in use in the air hydraulic pump

(Order no.: 426569) permissible.

### 3.2 Application hydraulic installation clamping modules

- Installation clamping modules for setup-time-optimised clamping in cutting and non-cutting processing.
- The pull-stud is fastened and installed using the flat-head screw.
- Support control via the blow-out function: Dynamic pressure with supported interchangeable pallet.
- The installation clamping module is opened hydraulically and mechanically locked through spring force.
- The pressure line can subsequently be disconnected at any time (installation clamping modules are clamped without pressure).

#### 3.2.1 Design of hydraulic installation clamping modules

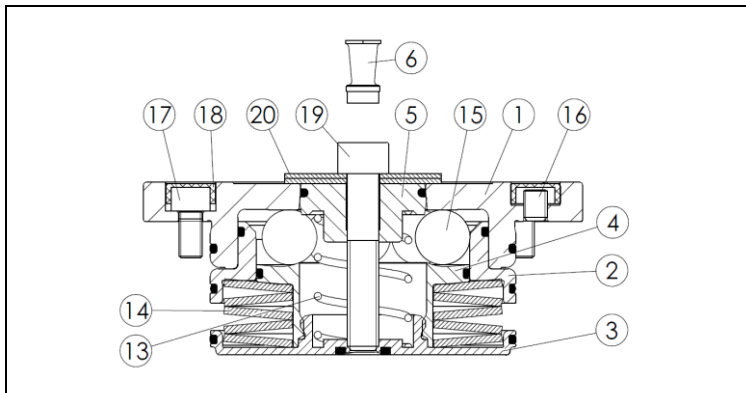


Illustration 1: Example of hydraulic installation clamping modules

- |    |                    |    |                |
|----|--------------------|----|----------------|
| 1  | Cover              | 14 | Disc spring    |
| 2  | Piston             | 15 | Ball           |
| 3  | Floor              | 16 | Threaded stud  |
| 4  | Ball support       | 17 | Cylinder screw |
| 5  | Central lock       | 18 | Cover cap      |
| 6  | Outlet nozzle      | 19 | Cylinder screw |
| 13 | Compression spring | 20 | Disc           |



Pre-installed installation aid, consisting of items 19 & 20.

### 3.2.2 Circuit diagram of hydraulic installation clamping modules

The hydraulic installation clamping modules have one hydraulic and three pneumatic connections.

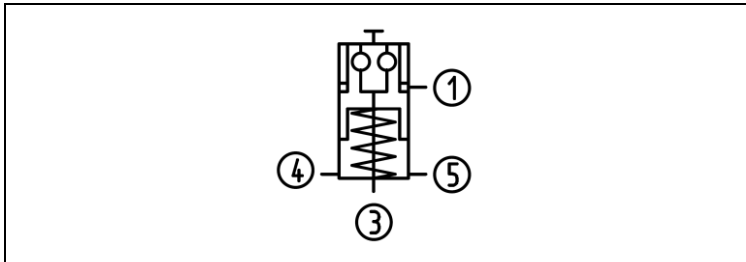


Illustration 2: Example of circuit diagram for hydraulic installation clamping modules

- 1 Hydraulic opening
- 3 Pneumatic blow-out and support control
- 4 Opening control, inlet
- 5 Opening control, outlet

### 3.2.3 Dimensions of hydraulic installation clamping modules

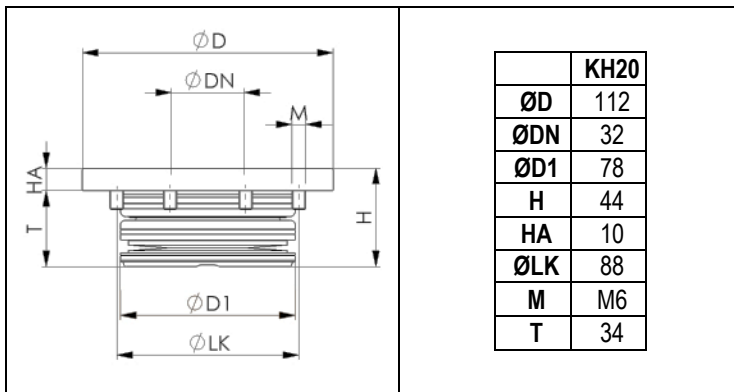


Illustration 3: Dimensions of hydraulic installation clamping modules

### 3.2.4 Example of circuit diagram for hydraulic installation clamping modules

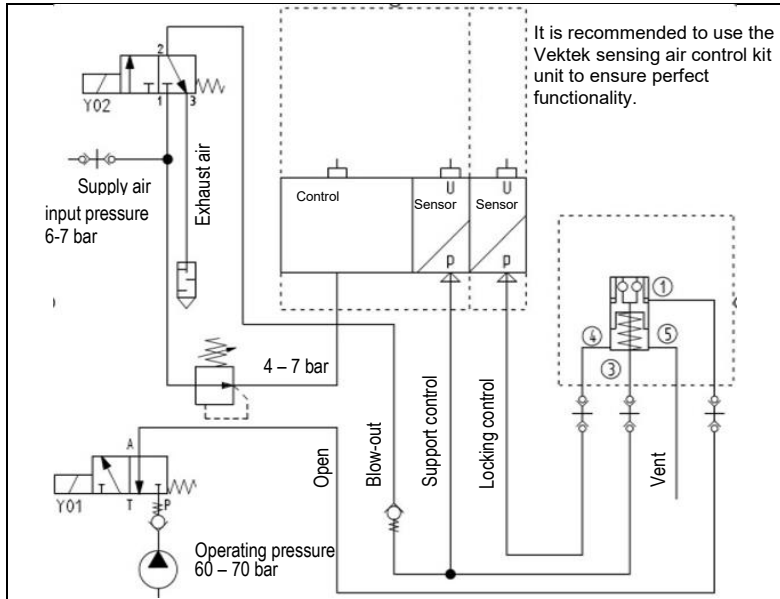


Illustration 4: Example of circuit diagram for hydraulic installation clamping modules

### 3.3 Pull-stud

#### 3.3.1 Design

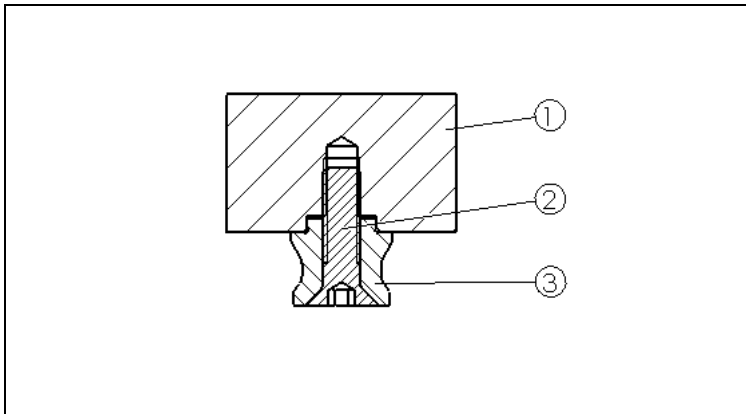


Illustration 5: Pull-stud design

- 1 Interchangeable pallet
- 2 Flat-head screw ISO 10642  
12.9
- 3 Pull-stud

### 3.3.2 Installation Instructions

- Bring the pull-stud with the flat-head screw into the intended hole of the pallet. While doing so, observe the arrangement of the various screw shapes and the alignment of the timing stud with the clamping system.
- Tighten the flat-head screw with a torque wrench and to the defined torque.




Size	Thread [mm]	Retaining force [kN]	Torque [Nm]
K20	M10	25	60
K20	M12	30	113
K20	M16	55	215

### 3.3.3 Arrangement and tolerances of the pull-studs

The timing points of the timing stud must be at an angle of 90° to the connecting axle between this and the zero-point stud.

Distance tolerance:

- A = Zero-point to timing stud: +/- 0.01 mm
- B = Zero-point/timing pin to undersized pin: +/- 0.03 mm

Designs of the pull-studs	Description
	Zero-point pull-stud (1) - for full centring
	Timing pull-stud (2) - for centring the axis that is still free
	Undersized pull-stud (3) - holding and clamping function only

### 3.3.4

### 3.3.5 Arrangement of the pull-studs - classical

This arrangement of the pull-studs always optimally positions the interchangeable pallet. At the same time, the zero-point pull-stud always represents the reference point. The timing pull-stud serves to compensate for the free axis. The undersized pull-stud has only a clamping and holding function.

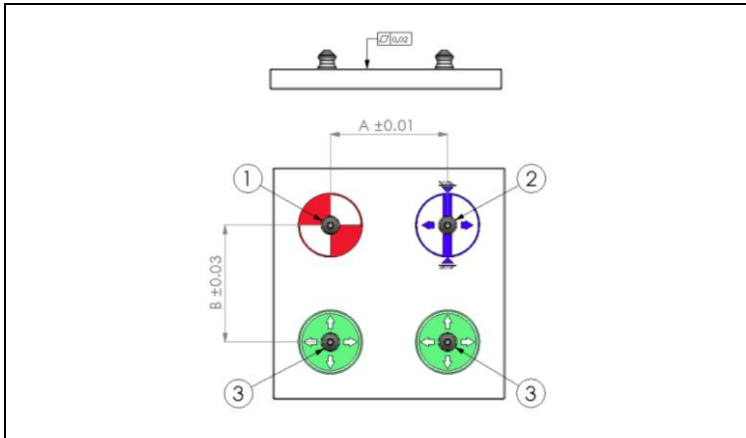


Illustration 6: Arrangement and tolerances of the pull-studs – classic

- 1 Zero-point pull-stud
- 2 Timing pull-stud
- 3 Undersized pull-stud

### 3.3.6 Arrangement of the pull-studs - optional

This exclusive use of timing pull-studs compensates for stronger temperature influences. The reference point always remains in the centre of the pallet. Of course, temperature influences from machine processing can generally be ignored since the heat generated is conducted away by the chips and coolant.

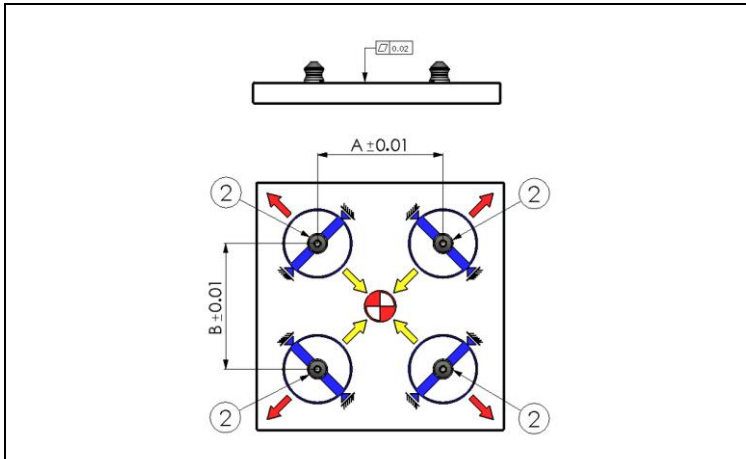


Illustration 7: Arrangement and tolerances of the pull-studs – optional

- 2 Timing pull-stud

## 3.4 Performance and restrictions on use

### 3.4.1 Pull-in force and locking force

The pull-in and locking force describes the force with which the bolt is pulled in and clamped with positive interlocking in the clamping module.

### 3.4.2 Holding force

The holding force specifies the maximum permissible axial pulling force of the engagement bolt screw. A safety value suitable for the application must additionally be taken into consideration. Elevated tensile forces can cause a material-induced elastic deformation of the components.

### 3.4.3 Safety precautions

**Safety catch:**



## WARNING

### **Dangers caused by vertically and horizontally suspended clamping!**

Non-observance can result in death or serious injuries!

- Attach an additional mechanical safety catch for vertically and horizontally suspended clamping.
- Consider a hazard analysis of the forces occurring and then carry out an accident risk assessment to take appropriate protective measures.
- Keep persons away from the danger zone.

## 3.5 Function description

### 3.5.1 Function of the hydraulic installation clamping module

The hydraulic installation clamping module has a hydraulic connection and a pneumatic connection. The installation clamping module is opened hydraulically (connection 1) and mechanically locked through spring force. Subsequent uncoupling of the pressure lines is possible at any time (module is clamped pressure-free). The blow-out (connection 3) is used for cleaning the inside and the contact surface. Shavings or dirt can be removed through the integrated blow-out.

### 3.5.2 Support control

Support control takes place via the blow-out (connection 3). Dynamic pressure arises, which can be sensed through a dynamic pressure control. The support control may only take place when the blow-out is switched off.

### 3.5.3 Opening control

With the clamping module open, dynamic pressure, which can be sensed through a dynamic pressure control, is created at the connection of the opening control (4). Flow takes place with clamped clamping module. The compressed air must be able to escape unhindered over the vent (5).

## NOTE

Monitoring of the pneumatic sensing functions is performed using a **Vektek Air Sensing Control Kit (ASCK), model 50-8240-00**. The ASCK supplies regulated compressed air to the sensing channels and monitors system back-pressure using an integrated electronic pressure switch.

Pressure changes occur when airflow conditions vary, for example when a workpiece is seated on the clamping module (support control) or when the piston is in the open or closed position (opening and locking control).

When airflow is restricted, system pressure rises above a defined setpoint, and a confirmation signal is generated. When airflow is unrestricted, pressure falls below the reset threshold and the signal is removed.

The ASCK provides reliable pneumatic confirmation of module status by monitoring pressure differentials within the sensing circuit.

### 3.6 Necessary tools

Tool	Size	Purpose	Product
Hex screwdriver	3mm Hex	Installation / disassembly	570263
Torque wrench	5mm Hex	Installation / disassembly	570263

## 4 Transport and Storage

### 4.1 Inspection by recipient when taking possession

Upon arrival at the customer, installation clamping modules must be inspected for visible transportation damage.

- Report any defects or damage immediately to Vektek LLC and the carrier, who is liable for transportation damage.

## NOTE

Any defects or damage must be claimed within 10 days of receipt of the product.

### 4.1.1 Unpacking



## WARNING

### **Risk of injury caused by improper installation and disassembly of the mounting kit!**

Non-observance can result in death or serious injuries!

- Observe the instructions attached to the installation clamping modules.
- Do not remove the mounting kit until the installation clamping module has been installed
- Install the mounting kit before disassembling the installation clamping modules

When unpacking the installation clamping modules, proceed as follows:

- Remove the packaging.
- Remove packaging materials, such as plastic film and tape, and dispose of properly.
- Do not throw away the original packaging. Keep it in case of return.
- Check the delivery for completeness based on your order.
- Always keep the provided documents; they contain important information on working with the installation clamping modules.
- If you detect transportation damage or discrepancies between the packaging contents and your order, inform Vektek LLC.

### 4.2 Supplied as standard

The installation clamping modules are supplied as standard with the following components:

- 1x Pre-mounted clamping module
- 1x Blow-out nozzle
- 2x Threaded studs
- 8x Cylinder screws
- 1x operating & installation manual

### 4.3 Temporary storage

If the installation clamping modules are not installed immediately after delivery, they must be carefully stored in a protected location. The installation clamping modules must be temporarily stored in such a way that they are protected from cold, moisture, soiling, chemical and mechanical influences. You can obtain the recommended storage conditions of the installation clamping modules from chapter. The following points must be considered: Clean and then grease the surface of the installation clamping modules.



No liability is accepted for damage resulting from improper storage!

## 5 Installation

The installation clamping modules are pre-mounted by Vektek LLC. Safety is only guaranteed if the installation clamping modules are properly connected according to applicable safety regulations.

The interchangeable pallet to be clamped with the integrated pull-studs must always rest completely on the contact surfaces of the installation clamping modules in the clamped state. To use the support control by means of dynamic pressure, the base plate of the interchangeable pallet must be even and polished (recommendation Rz3).

### 5.1 Tolerances and arrangement of the installation clamping modules

Maintain the specified tolerances in case of in-house production of a base plate and the installation hole for the installation clamping modules.

#### NOTE

The matching installation diagram is available from Vektek LLC.

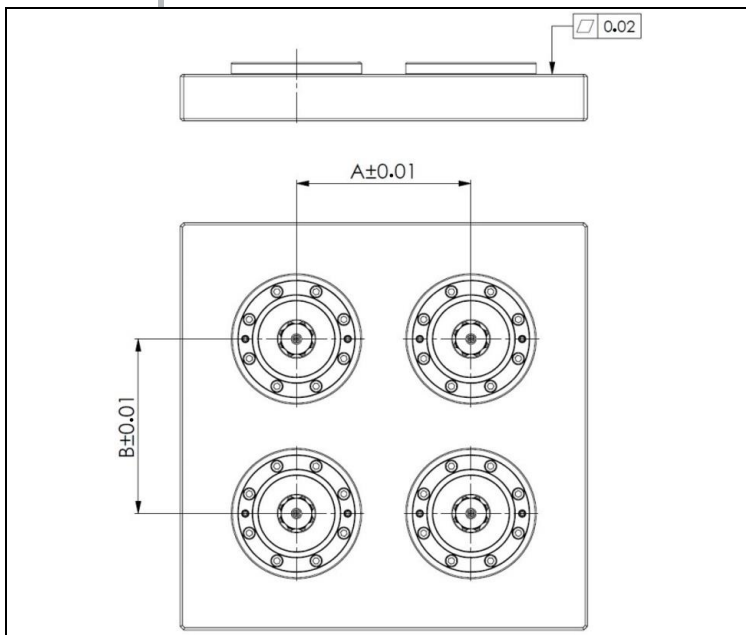


Illustration 8: Example of arrangement and tolerances

## 5.2 Ambient and Operating Conditions

Incorrect ambient conditions and operating conditions can cause the product to produce hazards that lead to serious injuries and considerable property damage and/or significantly reduce the service life of the product.

- Make sure that the installation clamping modules are sufficiently dimensioned according to the application.
- Make sure that the surfaces of the interface are always kept clean.
- Make sure that no chips of any kind reach the interface.
- Make sure that the installation clamping modules are used only within the defined usage parameters.
- Consider that corrosive, abrasive, and dusty environments (e.g. water, ozone, grinding dust) shorten the service life of the product.
- Check the resistance of the materials of the installation clamping module regarding the used or ambient media.

## 5.3 Preparatory measures

Before installation of the installation clamping modules, it must be ensured that

- connections for the compressed air or hydraulic air supply are prepared,
- additional lighting equipment for installation is available,
- the mounting surface is clean and dust-free,
- tools required for the installation are at hand:
  - Hexagon socket screwdriver / torque wrench

### NOTE

Note that the assembly aid must not be removed in either the hydraulic or pneumatic version.

## 5.4 Install the installation clamping modules

### Installation step 1

- Deburr and clean the installation hole.
- Then lightly grease the installation hole. Use petroleum-based grease (non- silicone).
- Insert the installation clamping module into the installation hole without tilting it.

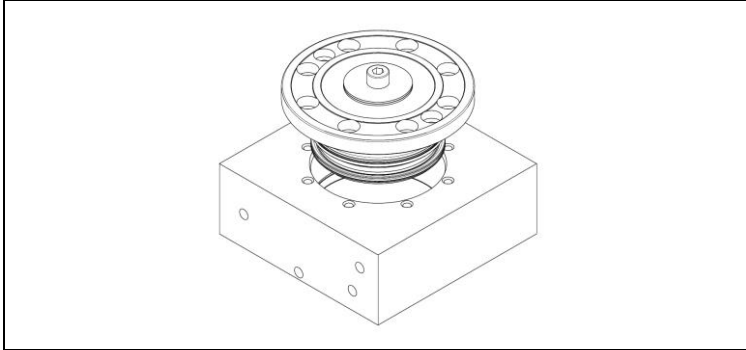


Illustration 9: Installation step 1

### Installation step 2

- Screw in all cylinder screws and tighten them crosswise to the corresponding tightening torque:
  - K20: (M6) 15 Nm
- Make sure that the spring is pre-tensioned at installation.

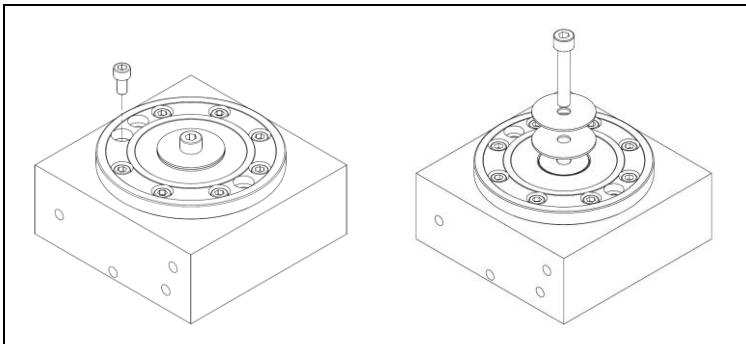


Illustration 10: Installation step 2 and 3

### Installation step 3

- Remove the mounting kit and keep it for possible disassembly.

#### Installation step 4

- Screw in the threaded studs (item 16)
- After contact with the fixture, loosen the threaded studs (item 16) again by 1/4 turn. Observe that the threaded studs are used for disassembly.

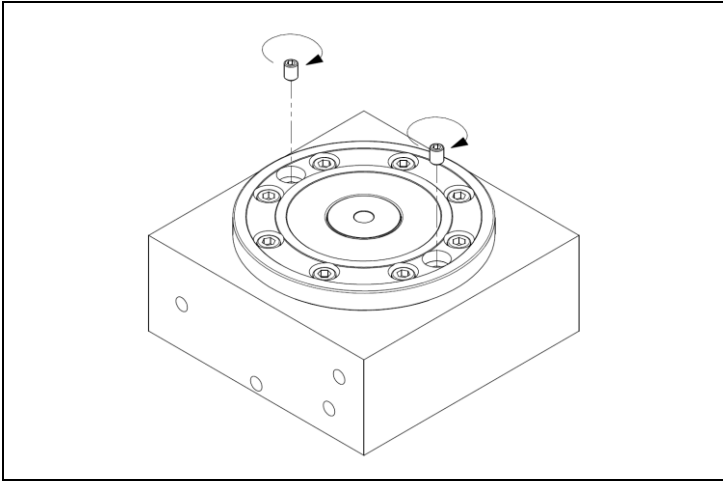


Illustration 11: Installation step 4

#### Installation step 5

- Install the blow-out nozzle (item 6) with medium Loctite.

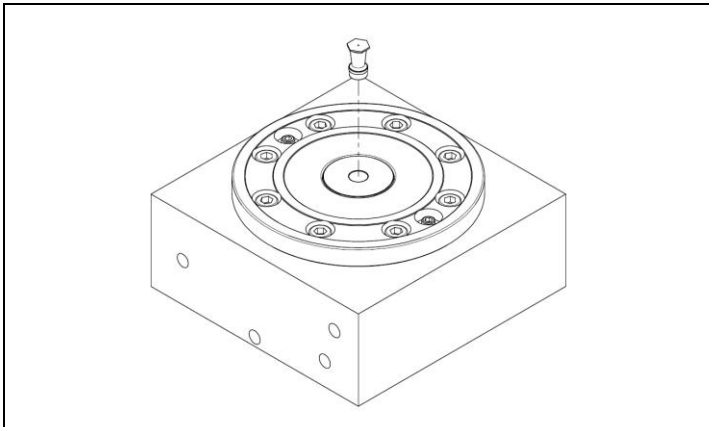


Illustration 12: Installation step 5

## Installation step 6

- Install the cover caps.

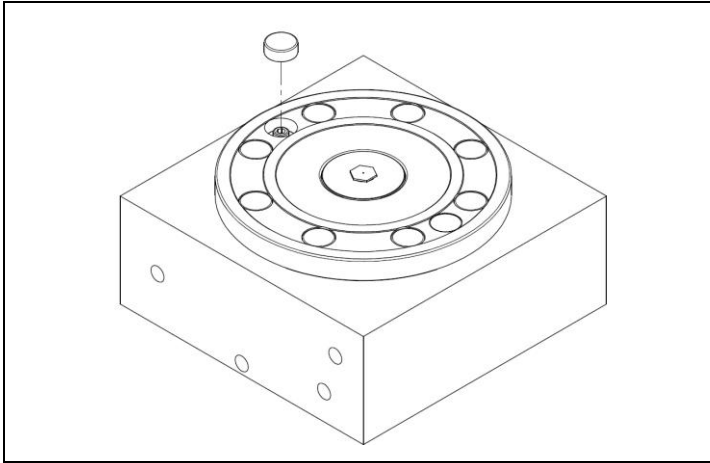


Illustration 13: Installation step 5

## 5.5 Disassemble installation clamping modules

### Disassembly step 1

- Remove the cover caps.

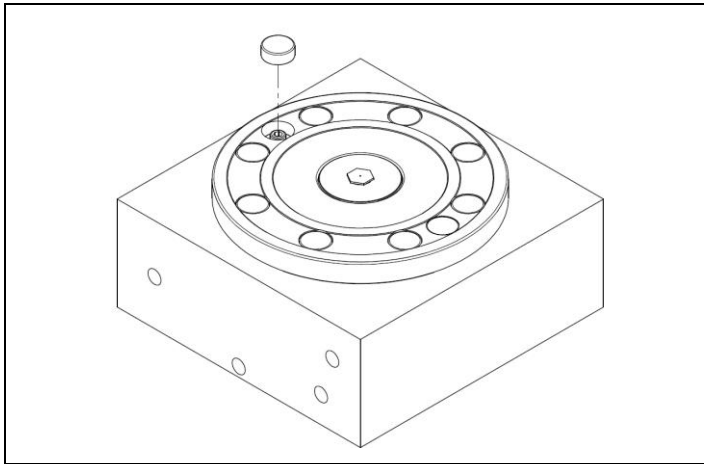


Illustration 14: Disassembly step 1

### Disassembly step 2

- Remove the central blow-out nozzle (item 6).

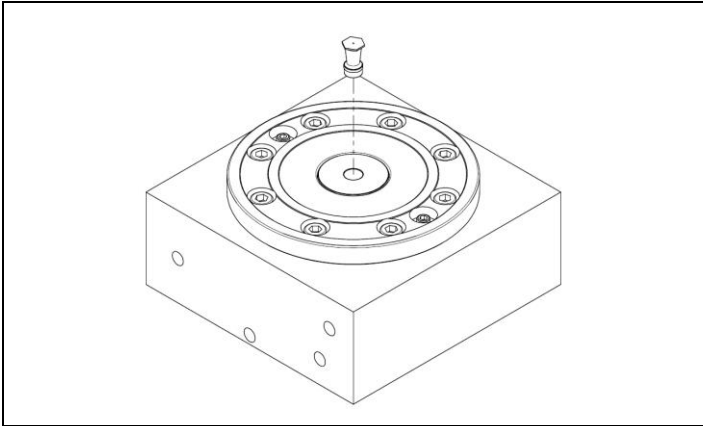


Illustration 15: Disassembly step 2

### Disassembly step 3

- Install the mounting kit.

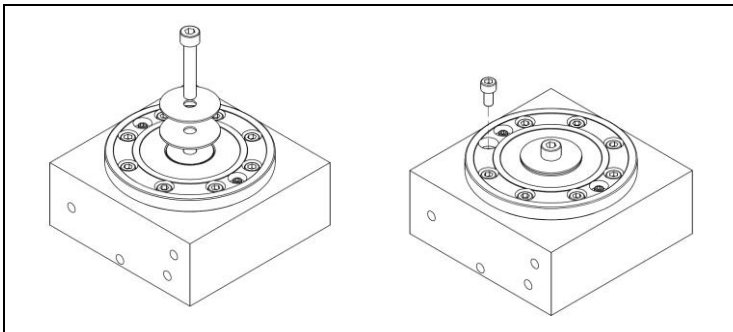


Illustration 16: Disassembly step 3 and 4

### Disassembly step 4

- Remove the cylinder screws (item 17).

## Disassembly step 5

- Screw in the threaded studs (item 16) evenly.  
This raises the installation clamping module from the installation hole until it can be pulled out. Make sure that the installation clamping module is pulled out evenly and without tilting.

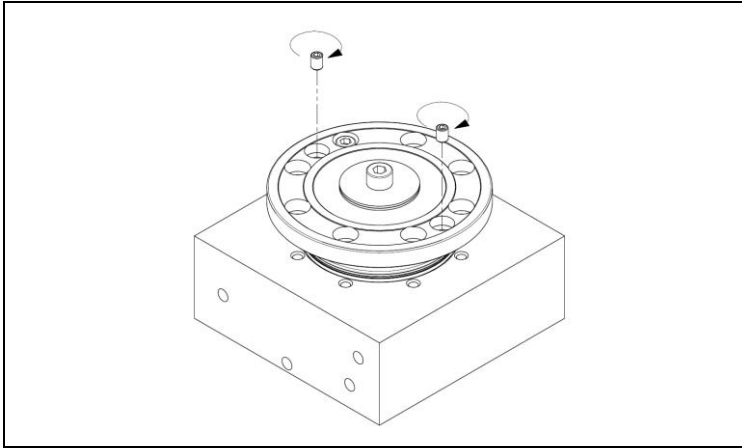


Illustration 17: Disassembly step 5

### NOTE

#### Installation aid:

Screw the installation kit, consisting of cylinder screw (item 19) and disc (item 20), into the central lock of the installation clamping module. In this way, the installation clamping module can be held together before removal so that it can be taken out as a unit.

Note that the feed bores for the pressure medium must be free during removal, as otherwise a vacuum could arise in the mounting bore.

## 6 Commissioning

Become adequately familiar with

- the equipment of the installation clamping modules,
- the mode of operation of the installation clamping modules,
- the immediate surroundings of the installation clamping modules,
- actions in an emergency.

Prior to initial commissioning or re-commissioning, carry out the following activities:

- Check the installation clamping modules for visible damage; immediately repair the defects found or report them to supervisory personnel - the installation clamping modules may only be operated in perfect condition.
- Check and make sure that only authorised persons are in the working area of the installation clamping modules and that no other persons can be endangered by engaging the clamping modules.
- Remove all objects and other materials from the work area that are not required for operation of the installation clamping modules.

## 7 Operation

### 7.1 Hydraulic installation clamping modules

#### 7.1.1 Opening procedure

Pressurise the installation clamping modules. The installation clamping modules release the pull-stud, which enables it to move in and out of the system. The installation clamping modules will remain open as long as pressure is applied to the opening connection.

#### 7.1.2 Clamping process

Switch off pressure to the installation clamping modules. The installation clamping modules interlock positively and are mechanically tensioned through spring force. The installation clamping modules will remain closed as long as no pressure is applied to the opening connection. The pressure line can be decoupled after the clamping operation - the installation clamping modules remain positively interlocked and self-locking.



### CAUTION



**During manual unloading and loading of the installation clamping modules, there is a risk of crushing limbs on moving parts and during the clamping operation!**

Non-observance can result in minor injuries!

- Use a loading aid.
- Do not reach into the installation clamping modules.

## 7.2 Integrated blow-out procedure

Air escapes from the installation clamping modules in the centre and serves to clean the interior space and contact surface when the central lock is actuated. Chips or soiling can be removed through the integrated blow-out by providing connection 3 with compressed air.



### CAUTION



**During operation, there is risk of eye injury, since flying chips can arise from the automatic blow-out!**  
Non-observance can result in minor injuries!

- Wear safety goggles.

### NOTE

Perform the blow-out only when the installation clamping module is open. When the installation clamping module is clamped, the pressure can open the module unintentionally.

## 7.3 Manual blow-out process

The inside of the installation clamping modules can be blown out with a commercially available compressed air gun or a vacuum device when the central lock is actuated.

## 7.4 Actuation of central lock

The central lock can be moved in manually against the spring force when the installation clamping module is open. When the central lock is relieved, the spring moves out again. In the moved-out state, this is secured against being pushed in when the installation clamping module is clamped. It is recommended to switch on the integrated blow-out when moving in and out.

## 7.5 Clamping installation clamping modules

- The installation clamping modules are tensioned when delivered.
- After correct installation in a plate (see installation diagram), the module can be opened through line 1.
- The central lock remains at cover height.
- When the installation clamping module is open, the opening control is under dynamic pressure. In this state, the workpiece can be brought into the module with the flat-head screw and pull-stud. The central lock is thereby pushed downward. With the blow-out connected, the dirt particles are blown out through the blow-out nozzle.
- Due to the pressure reduction in line 1, the module is closed by the built-in springs.
- In the clamped state, there is no dynamic pressure on the opening control.

## 7.6 Opening installation clamping modules

- Through renewed pressure build-up in line 1, the workpiece can be brought out of the module with the flat-head screw and pull-stud.
- The central lock moves upward due to spring force when pulled out.

## 8 Fault and repair measures

The information contained in this section supports the user in identification of malfunctions that can occur during operation of the system.

Fault	Cause	Repair measure
<b>Clamping modules are leaking, visible oil in the interior of the clamping module</b>	Seals defective	Disassemble clamping modules, replace seals
<b>Clamping modules do not open completely</b>	Below minimum pressure	Check the operating pressure
	Operation without lubricated compressed air	Use maintenance unit with oiler
	Below minimum tubing diameter	Use correct tubing diameter (min. Ø 6 mm)
	Connections are not connected properly	Check compressed air or hydraulic air supply
	Defect of a component due to overload	Replace clamping module or send it in

## 9 Maintenance

Appropriate maintenance is important for a long service life of the system and its components under proper functional and operating conditions, and it also guarantees the required operating safety over the long term.

### 9.1 Safety measures for maintenance work

Perform the specified maintenance work, such as cleaning, servicing, and inspections, when due. Before performing the maintenance work, observe the following points:

- Switch off pressure to the installation clamping modules.
- Secure the switched-off installation clamping modules against being switched on again unintentionally.
- Close off access to the work area of the installation clamping modules. Make sure that no unauthorised persons are in the working area of the installation clamping modules.
- Make sure that all installation clamping module parts have cooled off to the surrounding temperature.
- Immediately replace all imperfect installation clamping module parts.
- All installation, operating, maintenance and cleaning personnel must observe the applicable accident prevention regulations in the country where the machine is installed.
- The installation clamping modules are constantly under high spring pressure. Due to the pre-tensioning of the spring stack, serious and even life-threatening injuries can result from improper maintenance.
- Wear safety shoes and all other required individual protective equipment as well as protective work clothing that covers the body as completely as possible.
- Do not wear any rings, watches, necklaces, bracelets, or loose clothing during maintenance work.
- To guarantee flawless functionality, only use original replacement parts.

After completion of the maintenance work and before using the installation clamping modules again, perform the following activities:

- Check all previously loosened screw connections again for firm seating.
- Check whether all previously removed components have been properly reinstalled.

### 9.2 Inspection and maintenance work

#### 9.2.1 Maintenance intervals

Maintenance point	Maintenance work	See section
<b>Daily</b>		
Installation clamping modules	Cleaning	9.2.2.1
<b>Monthly</b>		
Installation clamping modules	Visual inspection	9.2.3.1

Maintenance point	Maintenance work	See section
Installation clamping modules	Check fittings	9.2.3.2
Installation clamping modules	Check for deposits	9.2.3.3
Installation clamping modules	Check for leak tightness	9.2.3.4
Check compressed air hoses / hydraulic hoses or tubes	Check for leak tightness	9.2.3.5
<b>Annually (but not later than after the specified clamping cycles)</b>		
Installation clamping modules	Replace external O-rings	9.2.4.1

## 9.2.2 Maintenance – daily

### 9.2.2.1 Cleaning

Proceed as follows when cleaning the installation clamping modules:

- Check the inside of the installation clamping modules for dirt.
- Clean all installation clamping module components thoroughly and remove contamination, dust, and foreign objects from the entire installation clamping module area. General machine cleaning materials should be used for this. Never clean the installation clamping modules with high-pressure cleaners or degreasing cleaning materials.
- Do not use abrasive or corrosive materials for cleaning the installation clamping modules that may impair the legibility of the markings or type plates.

## 9.2.3 Maintenance – monthly

### 9.2.3.1 Visual inspection

- Visually inspect the condition of the installation clamping modules. When doing so, check the installation clamping modules for:
  - mechanical damage,
  - dirt deposits and
  - unusual noises.

### 9.2.3.2 Check fittings

- Check the fastening and flat-head screws for firm seating. Tighten loose fittings (screw tightening torque corresponding to the screw size and strength class).

### 9.2.3.3 Check installation clamping modules for deposits

- Check the installation clamping modules for deposits. Remove all deposits on the installation clamping module surface.

### 9.2.3.4 Check installation clamping modules for leak tightness

- Check the installation clamping modules for leak tightness and function.

### 9.2.3.5 Check compressed air hoses / hydraulic hoses or tubes for leak tightness

- Check compressed air hoses / hydraulic hoses or tubes of the installation clamping modules for leak tightness.

### 9.2.3.6 Check oil level / change oil

- Check the oil level in the hydraulic system.
- Change the oil in the hydraulic system when necessary.

## 9.2.4 Maintenance – annual

Annual maintenance, but not later than after the following cycles:

Module	Clamping cycles
570263	1,500,000

### 9.2.4.1 Replace external O-rings

When replacing the outer O-rings, proceed as follows:

- Replace all outer O-rings
- Lightly grease the O-rings of the installation clamping module.

Module	Seal Kit
570263	60570263